

Integrative Veterinary Education, Inc.

Alpha Waves

Making Waves in Medical Therapy

Volume 3, Issue 1

June 2007



Using Alpha-Stim® in a Veterinary Practice Clinical Cases

If You Could See Her Leaping Now!

SIGNALMENT: Six year old f/s indoor Birman cat became acutely paretic. Initial examination, CBC, chemistry, and radiographs were not diagnostic. Treatment included a corticosteroid injection. Toxoplasmosis test pending.

ASSESSMENT: The cat was declining in status daily. Proprioceptive reflexes were very slow to negligible. She could not stand or walk. Some nystagmus was present.

THERAPY: Alpha-Stim® MET animal spinal protocol using the probes was administered twice a day. Each session included CES application for 20 minutes. Standard Process® whole food supplements and physical therapy exercises were delivered twice a day.

RESULTS: Within 12 hours after her initial Alpha-Stim® treatment she had improved and her reflexes were stronger. Two days later a Toxoplasmosis test result was positive and Clindamycin antibiotic was prescribed. By day sixteen she was standing and taking a few steps, at six weeks she was walking well and shortly thereafter jumping again. Her caretaker attributes the speed of her recovery to the quick implementation of Alpha-Stim® and her whole rehabilitation program.



Paralyzed Dog Regains Function

SIGNALMENT: Six year old f/s Dachshund with acute onset rear paralysis. Assessment at a university veterinary college gave the owners less than two percent chance for the dog to ever walk again even with surgery. Owners elected to transfer her immediately to a rehabilitation practice for therapy.

ASSESSMENT: Absence of proprioception, bladder function, and tail response. Application of a TENS milli - amperage electrical stimulation on neuromuscular junctions of the quadriceps muscles did elicit contraction. This indicated a positive efferent stimulus and the presence of sufficient nerve conductivity to pursue therapy.

THERAPY: Alpha-Stim® MET with AS-Trodes 8-12 hours per day for the first 3 days followed by probe spinal paralysis protocol BID. CES application once a day every day. Standard Process® whole food supplements. Underwater treadmill therapy began one week post injury.

RESULTS: Day 10 she was beginning to use her legs without assistance in the water. Patient stood up without support on day 12, on day 14 post-injury she began walking on land. Therapy continued, reducing frequency and adjusting protocols as she improved. No further relapses occurred and three years later she continues to do well.

Polo Horse with Questionable Future



SIGNALMENT: A six year old Thoroughbred racehorse mare had been off the track for two years and was now being used for polo. She was recently purchased with the understanding that she had some behavior issues. A wolf tooth had been found growing in the center of the roof of her mouth. It was surgically removed but her attitude had not reverted. The situation was so severe that her life was in question. The least surprise would cause her to rare-up, pull back, and flip over when tied. If on the lead she would run back and/or bolt if frightened. She was not safe to be around and the owners were concerned for everyone's safety.

ASSESSMENT: The mare was nervous, head shy, and generally fidgety during the evaluation. Her eyes were consistent with a sympathetic stimulus response. Orthopedic manipulations were required to correct pelvic, lumbar, and cervical incongruities.

THERAPY: An Alpha-Stim® CES was leased for at home daily treatments starting BID for 5 days then once daily for 5 more days. Specific exercises for belly, back and rear legs were also recommended.

RESULTS: The mare had a dramatic change in personality. In less than one month her entire work ethic and attitude had improved, her eyes were calm, and any reaction she had was minimal. No further episodes of raring or pulling or bolting had occurred.

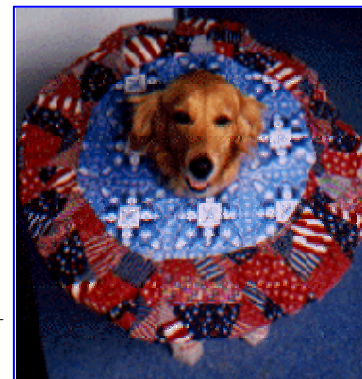
Barrel Racing Horse Can't Make the Turns

SIGNALMENT: A ten year old American Quarter Horse mare with normally quick turns and short run time was not performing. There was a problem with lead changes, endurance and her personality was also atypical for her.

ASSESSMENT: Pain in lumbar spine, reduced motion to her pelvis, shortened stride.

THERAPY: Following the evaluation and orthopedic manipulations an Alpha-Stim® session using the animal lumbar-extremity protocol and CES was administered. An AS-100 was leased to the owners for at home daily treatments for 14 days. Each session included MET to the lumbar spine, the performance protocol and a CES application for 20 minutes. Specific exercises and a return to work program was also recommended.

RESULTS: The one month follow-up visit revealed a horse who was comfortable, supple, pain free and performing even better than she had before her visit and the Alpha-Stim® treatments.



The more she licked it... the more she licked it

SIGNALMENT: Five year old f/s Golden Retriever with a 1 1/2 year duration of a severe carpal lick granuloma. Standard veterinary care, referral to a dermatologist, and work with a board certified veterinary behaviorist during the preceding 18 months had failed to resolve the lesion or alter her mental state toward the lesion. Now in a rescue foster home she did not play well with others and would dig incessantly when left alone outside.

ASSESSMENT: She presented donned with a super-sized customized E-collar and had athletic socks on both front feet extending over the elbows and clipped above her shoulders. The inflamed, ulcerated granuloma measured 7cm x 5cm x 1cm. Her overall demeanor was one of a sympathetic dominant state.

THERAPY: Alpha-Stim® MET using the probes in a 'circle the dragon' protocol was applied around the wound twice a day. CES application was initiated at 20 minutes BID gradually reducing to once a day for two weeks only. Alpha-Stim MET was used for four weeks. Standard Process® Canine Dermal Support™ whole food supplement was given for four months.

RESULTS: After the initial two week induction she had ceased worrying about the wound, was able to reduce her costume and by 1 month she was free of it entirely. Her condition continued to improve, her behavior became relaxed, she learned to interact normally with other dogs in the home. By six months after she had started therapy the wound was totally healed with only a small scar remaining. She never licked the carpus again for the rest of her life.

Making the Phantom Pain Vanish Forever

SIGNALMENT: Six year old m/n Bassett Hound with a chronic arthritic hip secondary to an injury. A failed FHO resulted in amputation of the leg. He had restlessness, insomnia, and pain at the surgical site.

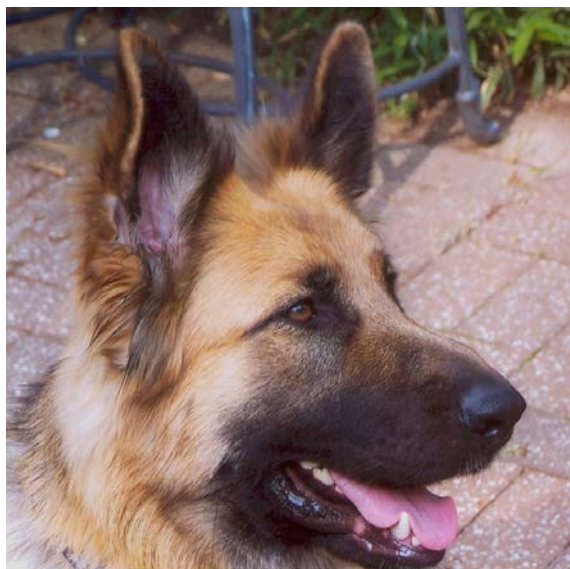
ASSESSMENT: The dog was sensitive to any touch of the stump area, would cry if bumped, and had some residual swelling two weeks after surgery.

THERAPY: Alpha-Stim® MET with AS-Trodes which were placed one at the stump and the other on the bottom of the opposite paw. Treatments were administered one hour per day for one week then every other day for one week. Each session included CES application for 20 minutes.

RESULTS: After two weeks of therapy the dog no longer exhibited pain, was sleeping through the night and interacting with the family again.



Being Apart Was More Than She Could Bear!



SIGNALMENT: Nine month old f/s German Shepherd mix dog rescued from a shelter. Severe separation anxiety occurred every time the owner would leave home for the day. She had been on drugs and homeopathic remedies but undesirable side affects were noted and little if any improvement. She and her owner were currently in a behavior training program. Video cameras were installed in the home to help determine her anxiety patterns and monitor her actions.

ASSESSMENT: She exhibited multiple behaviors and reactions that placed her in the state of a sympathetic dominant autonomic nervous system.

THERAPY: Alpha-Stim® CES application began at 60 minutes twice a day for two weeks gradually reducing by only ten minutes (per session) each week. Once she was successfully maintaining a level of improved function (having less anxiety and destructive habits) at 20 minutes twice a day (which required 4 months) her treatments were reduced to once a day. With time her therapy sessions were reduced to intermittent as needed depending on her behavior, the events of the day, and the length of time the owner was expected to be gone. This dog continues to get short treatments in the mornings but not on any regular schedule.

RESULTS: While anxiety in humans is one of the easiest conditions for Alpha-Stim® to affect, it takes considerable time in contrast to get the same response in dogs. It requires a very gradual reduction in treatment time. These clients were very pleased with the positive results achieved by using Alpha-Stim®.

Integrative Veterinary Education, Inc.

When Knowing Counts!



1825 Denmark Road * Union, MO 63084

Phone: 636-583-6293 * Fax: 636-584-0371 * E-mail: drfrick@yhiti.net
